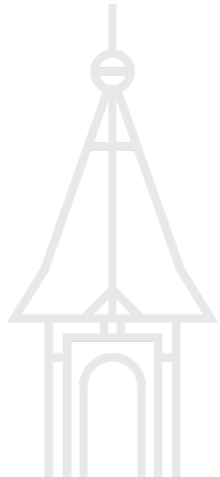


Palais Livingston



FPC

Frankfurter PresseClub

Tradition & Modernity



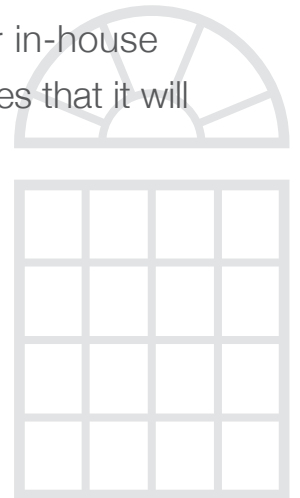
Palais Livingston

You will find our conference rooms in an extraordinary atmosphere in the heart of Frankfurt.

Palais Livingston, which was built in 1880, offers you modern, well-equipped rooms for your event. Flexible seating options and state-of-the-art conference technology are available to you here.

Whether press conferences, seminars, conferences, corporate events, meetings or as a trade-fair location – the Palais Livingston is the right address for every type of event.

Our experienced team will assist you with organisation, catering and all technical and room-related issues. The all-round support provided by our in-house service staff during your event guarantees that it will be a success.



Conference Room 1

1st floor



Conference Room 1

Conference Room 1 is the smaller of our two conference rooms on the 1st floor. With an area of 31m², it offers space for a maximum of 24 people, depending on the seating arrangement.

The charming and bright conference rooms in the Palais Livingston create a warm atmosphere that supports the open and familiar exchange between our alumni in a pleasant way.“

INSEAD Alumni Association Germany e. V.

Location

1st floor / fully accessible/
elevator

Size

31 m²

Capacity

Max. 24 pers.

Technical features

Wi-Fi / LAN / projector /
screen / sound system /
microphones / conference
phone / video conference

Seating

Hollow square: 12-16 pers.

Oval: 12-15 pers.

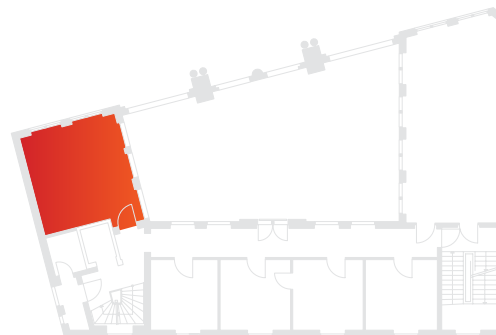
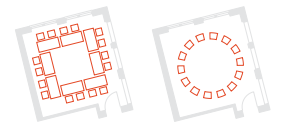
Horseshoe: 10-12 pers.

Classroom: 16 pers.

Boardroom: 12 pers.

Theatre: 24 pers.

Seating suggestions

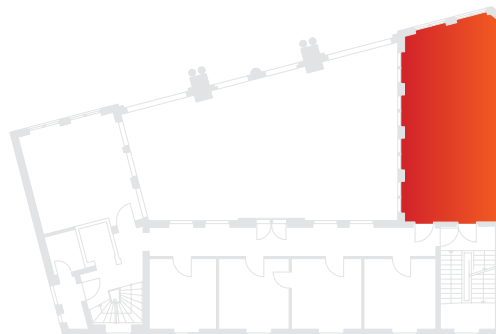


Conference Room 2

With its almost 54m² our Conference Room 2, located on the same level as Conference Room 1, is very suitable for press conferences, but also for lectures and seminars. Different seating arrangements are also possible here, e.g. horseshoe, boardroom, theatre or classroom style. A maximum of 48 people can be seated in rows.

A bright, modern ambience has been created here in a venerable building. Together with the good service and the technical equipment, we have everything we need for a successful event.“

Ernst & Young Wirtschaftsprüfungsgesellschaft GmbH



Location

1st floor / fully accessible
elevator

Size

54 m²

Capacity

Max. 48 pers.

Technical features

Wi-Fi / LAN / projector /
screen / sound system /
microphones / conference
phone / video conference

Seating

Hollow square: 26 pers.

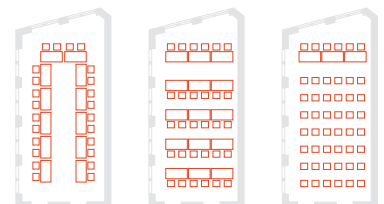
Horseshoe: 20-24 pers.

Classroom: 30 pers.

Boardroom: 26 pers.

Theatre: 48 pers.

Seating suggestions





Conference Room 2

1st floor

Conference Room 3

2nd floor



Conference Room 3

Our conference room 3, located beneath the gabled roof on the 2nd floor is ideal for lectures for up to 70 people seated in rows. Conferences and seminars for up to 30 people are also possible here.

Our participants feel at home in the inviting ambience of conference room 3 on the top floor. The design of the room, the technology on offer and the always friendly and professional service make every meeting a Memorable event“

Deutsch-Britische Gesellschaft Rhein-Main e. V.



Location

2nd floor / fully accessible / elevator

Size

83m²

Capacity

Max. 70 pers.

Technical features

Wi-Fi / LAN / projector / screen / sound system / microphones / conference phone / video conference

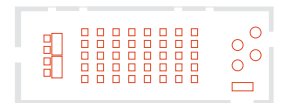
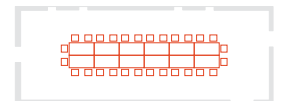
Seating

Classroom: 24 pers.

Boardroom: 28 pers.

Theatre: 70 pers.

Seating suggestions



Arcade Room

The Arcade Room with its bar is located in a side wing of the ground floor and can also be hired as an exclusive event venue with various seating options. The French windows overlooking the inner courtyard of Palais Livingston, which is framed by the neo-baroque double arcades and the three-winged building complex, are particularly attractive. This is a wonderful place to sit outside in summer.

Palais Livingston exudes a very special charme that delights our guests. Familiar and at the same time busy and concentrated. Surrounded by a creative and cordial service that leaves nothing to be desired.“

Roche Pharma AG



Location

Ground floor / fully accessible

Größe

54m²

Personen

Max. 40 pers.

Technical features

Wi-Fi / LAN / portable projector /
portable screen / portable sound
system / microphones /
conference phone / video
conference





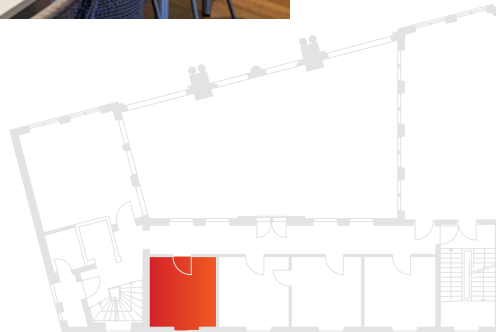
Arcade Room Ground floor

We, the BPW Club Frankfurt a. Main, have been guests at Frankfurter PresseClub for years, not only because of its easy accessibility and location in Frankfurt, but above all because of the always friendly and highly helpful team. Whether it's arrangements, event organisation or last-minute changes, the FPC team always has a solution! The Palais Livingston is a great address for our business and both our members and guests feel at home there!"

BPW Club Frankfurt am Main

Small Meeting Room

The 15 m² room on the 1st floor is designed for up to 10 people and is usually used as a conference room, back office, for classic business meetings or as an office that can be booked at short notice.



Location

1st floor / fully accessible
elevator

Size

15 m²

Capacity

Max. 10 pers.

Technical features

Wi-Fi / LAN / portable projector /
portable screen / conference
phone / video conference

Seating

Boardroom: 10 pers.



Vaulted Cellar

In the basement of the building, an additional vaulted cellar with an area of around 43m² was created as part of the refurbishment. Small art events such as literary readings and music evenings have already taken place here. Workshops, exhibitions and conferences are also possible.

Location

Basement / fully accessible
elevator

Size

41 m²

Capacity

Max. 26 pers.

Technical features

Wi-Fi / LAN / portable projector /
portable screen / portable sound
system / microphones /
conference phone / video
conference

Seating

Hollow square: 16 pers.

Horseshoe: 14 pers.

Classroom: 18 pers.

Boardroom: 16 Pers.

Theatre: 26 pers.



Guests enjoy the special historical ambience and the modern interior design. The rooms are steeped in over a hundred years of history.

The neo-baroque building was built in 1880 by order of M. L. Livingston, a wealthy merchant who had returned from America. Livingston, who was born Löwenstein in Walsdorf near Idstein, had made his fortune selling gold mining equipment in faraway California during the gold rush. The three-winged building in Ulmenstraße served the merchant as a stable and coach house, i.e. as a farm building for carriages and equipment, which were transported to the first floor via a lift.

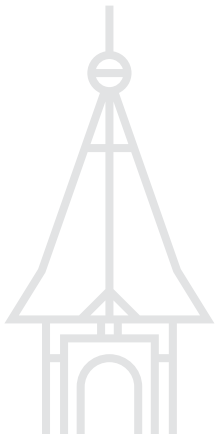
Livingston died shortly after the building was completed. The building was then sold to the Rothschild family, which is why it is still mistakenly called Rothschild'scher Pferdestall (horse stable).



After the Second World War, the building, which was spared from bombing, served as a venue for a cabaret theatre, then it was the warehouse for Fotowerke KG, and for a time it served as temporary accommodation for the Bettina School.

In the 1960s, the Westend was to be transformed into an office and banking district. Numerous old buildings (including Palais Livingston) were earmarked for demolition to make way for modern office buildings. The fierce and long-lasting protests of the citizens finally led to the partial rescue of the neighbourhood and a change in urban planning.

In 1978, the city bought the building and renovated it to turn it into a civic centre. In 2011, the Frankfurter PresseClub and the restaurant 'Herr Franz' moved in after the building had been renovated again and converted into a modern conference and meeting venue for companies and organisations.





The history of Palais Livingston

Contact person

Tatjana Strippel

Tel. +49 69 28 88 00

info@palais-livingston.de

www.palais-livingston.de

Frankfurter PresseClub e.V.

Ulmenstraße 20

60325 Frankfurt am Main

HOW TO FIND US

Public transport

Underground lines 6 & 7, Alte Oper station.
Exit Kettenhofweg, after about five minutes on foot you have reached your destination.

S-Bahn

S 1-6, S 8, S 9, Taunusanlage station,
Exit Guilletstraße. From there it's a maximum of five minutes on foot to Ulmenstraße.

By car

From the west: via A66 motorway, exit Messe;
from the south and east: via A5 motorway, Westkreuz, towards Senckenberganlage;
from north: via A5 motorway, Nordwestkreuz, onto A66 motorway, Messe exit.

CAR PARKING FACILITIES

- ① Parkhaus Alte Oper
- ② Parkhaus Opernturm
- ③ Parkhaus Trianon

FPC

Frankfurter PresseClub

